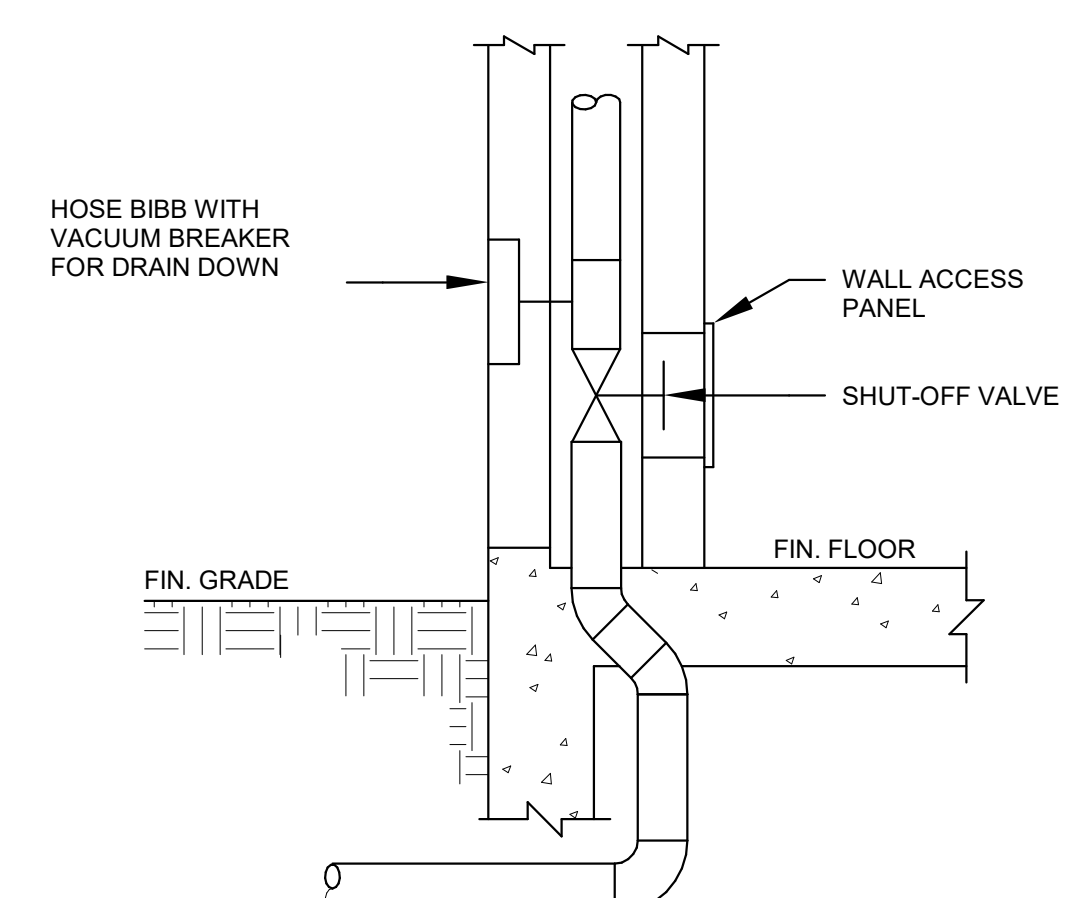


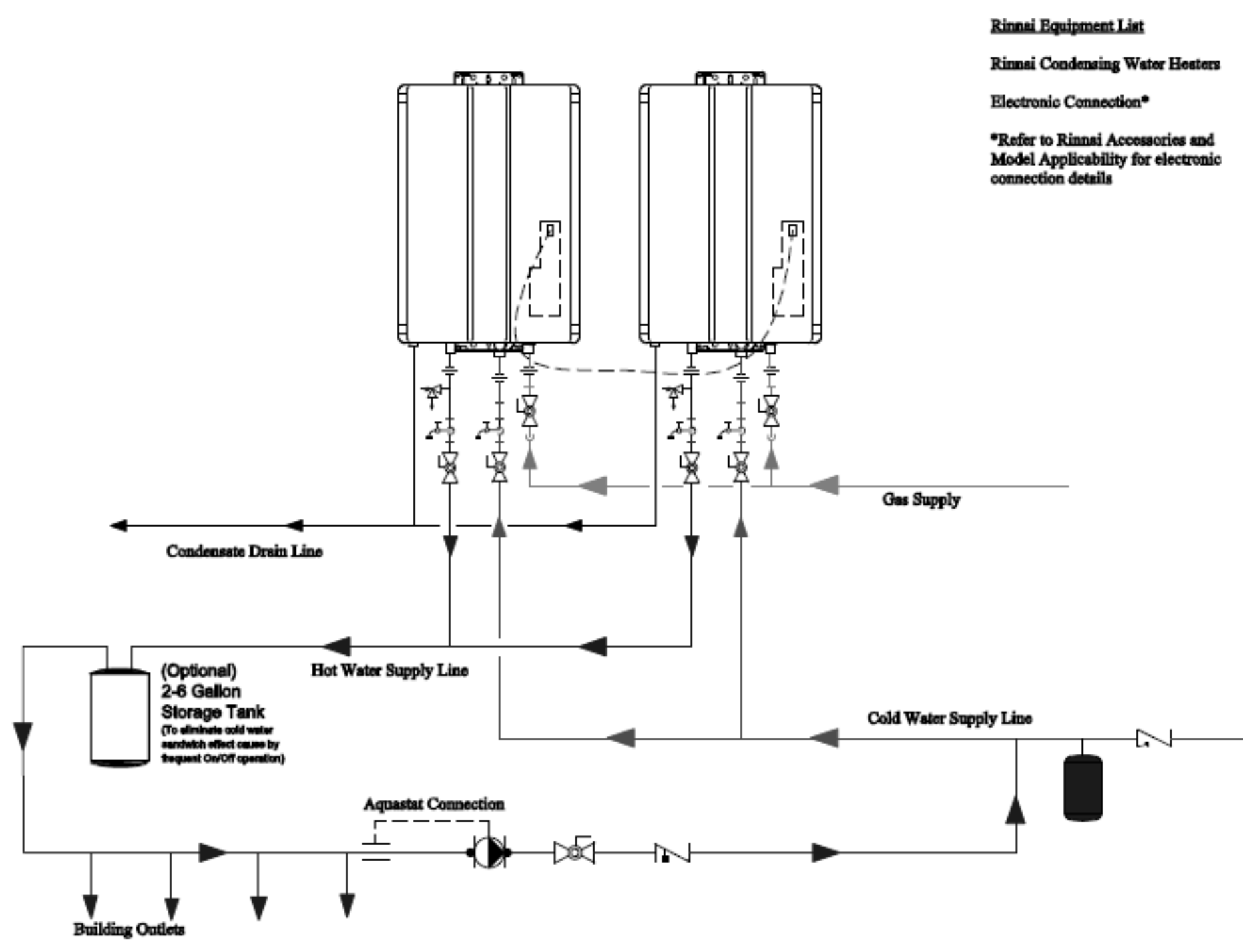
**3 EXTERIOR CLEANOUT**  
N.T.S.



**4 WATER ENTRY DETAIL**  
N.T.S.

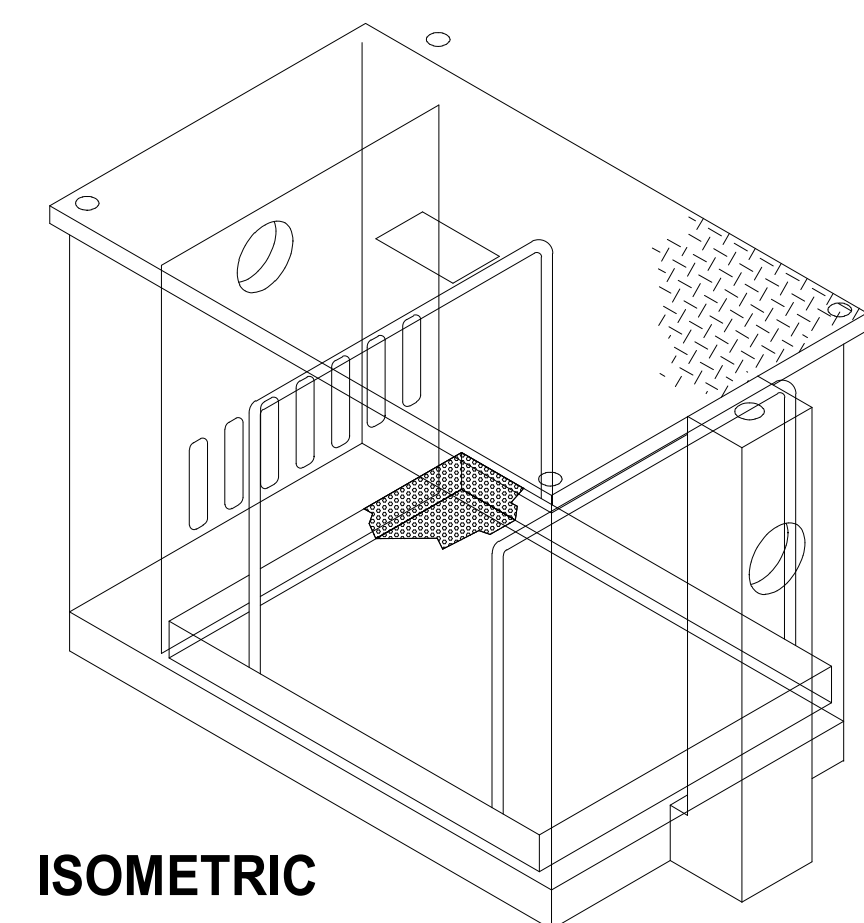
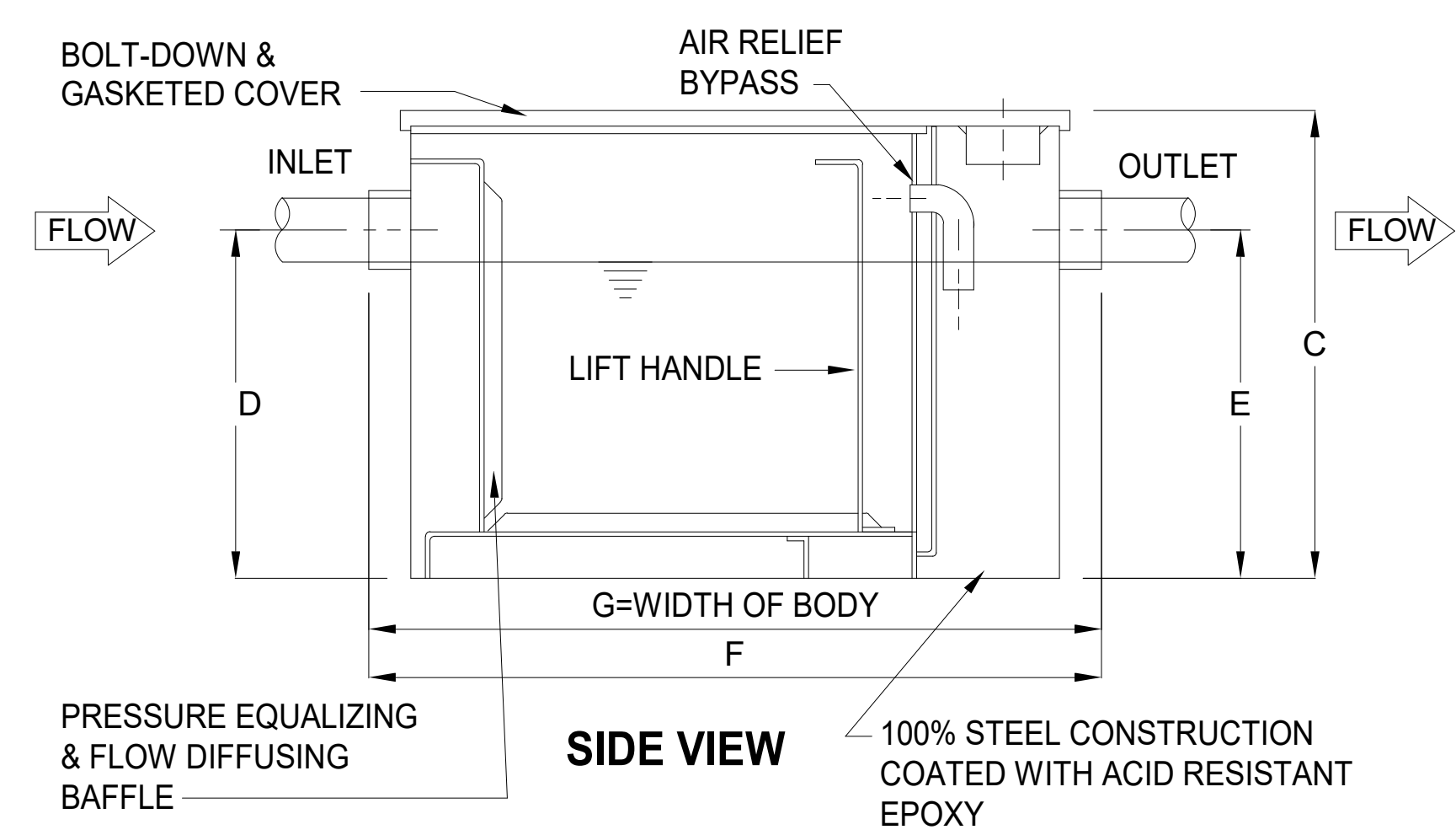
**Condensing Tankless Two Unit Circulation**

**Note:**  
Condensate piping shall be CPVC or PVC material and shall not be smaller than the drain connection on the appliance.  
Components of the condensate drainage shall be CPVC or PVC material. All components shall be selected for the pressure and temperature rating of the installation.  
Where the drain pipes from more than one unit are manifolded together for condensate drainage, the pipe or tubing shall be sized in accordance with an approved method as dictated by local codes.  
Condensate must be disposed of according to local codes.  
Pump should be controlled by an Aquastat, Timer or Combination Aquastat and Timer.  
Pump should be sized to maintain circulation loop temperature.  
The pump should be sized to overcome the pressure loss through the tankless water heater, supply, and return plumbing. Reference the Rinnai Hot Water System Design Manual, Pump Sizing for Circulation.  
Pump should be of bronze or stainless construction.



**5 TANKLESS GAS WATER HEATER**  
N.T.S.

**Rinnai Equipment List**  
Rinnai Condensing Water Heaters  
Electronic Connection\*  
\*Refer to Rinnai Accessories and Model Applicability for electronic connection details

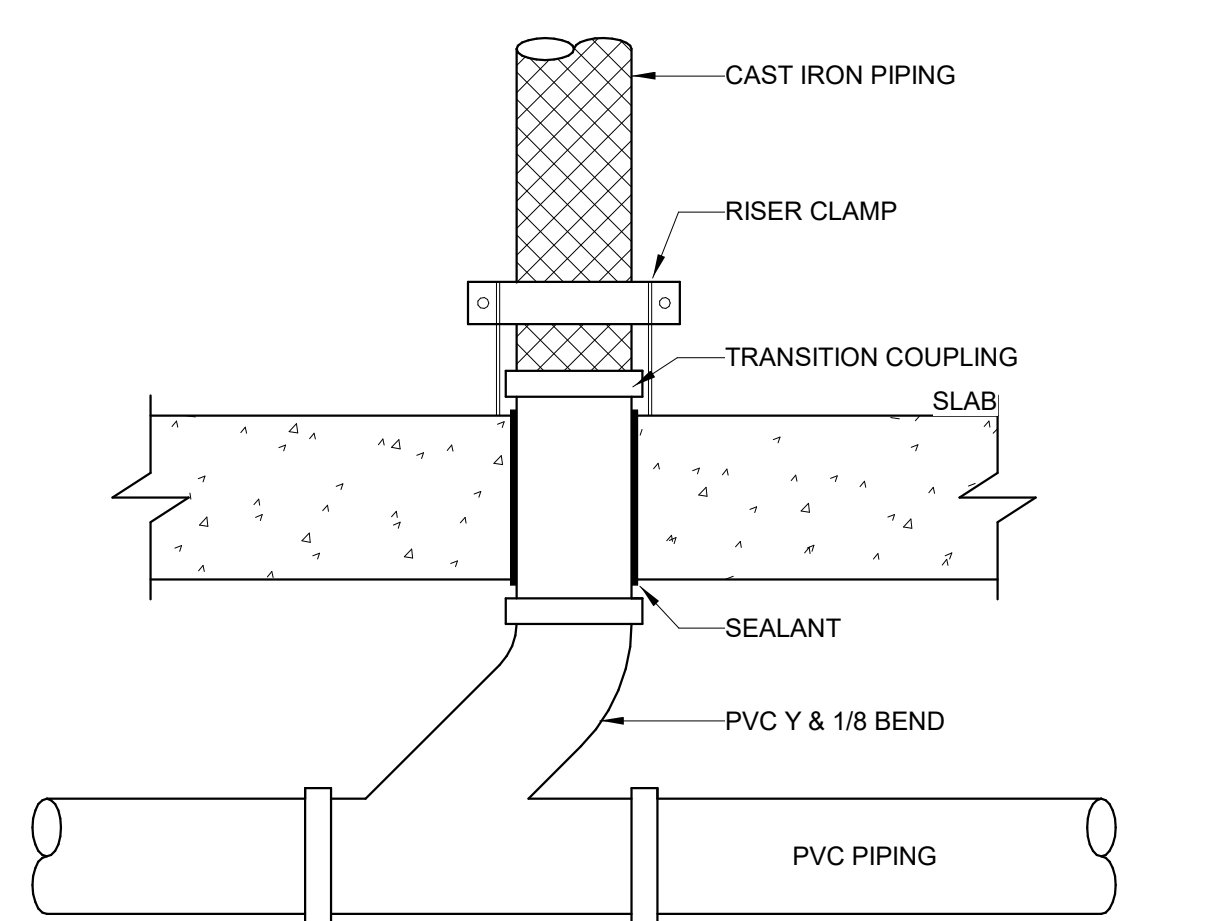


**GREASE INTERCEPTOR**

MODEL	FLOW RATE GPM	GREASE CAPACITY LBS	VOLUME GAL	C	D	E	F	G	EMPTY WT LBS	INLET/OUTLET NO-HUB CONN.
PARK EQUIP MGTL-250	125	250	150	30-1/8"	24-1/2"	24-1/2"	49-1/4"	40"	750	3"

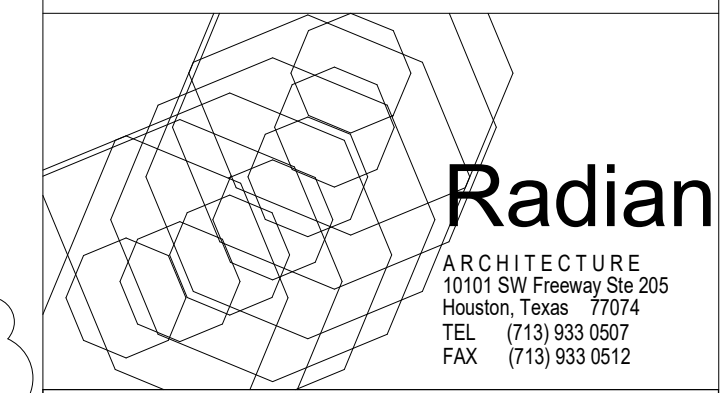
NOTE: FLOW RATE GPM DESIGNED ON TOTAL FLOW RATE OF A 4" DIAMETER PIPE. 4" DIAMETER MAXIMUM FLOW RATE = 125 GPM.

**1 MECHANICAL GREASE INTERCEPTOR**  
N.T.S.



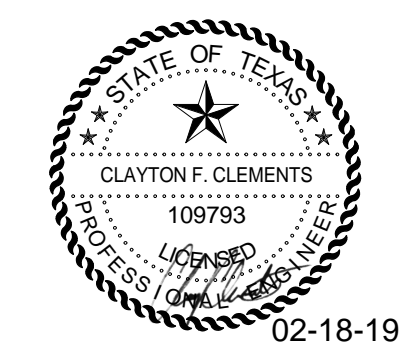
**2 CAST IRON TO PVC - BELOW SLAB**  
N.T.S.

**OPTIMUM CARE**  
**SUGAR LAND, TEXAS**



**Revision Schedule**

#	Date	Description
10-26-18		PERMIT, PRICING, AND CONSTRUCTION
02-14-19		CITY COMMENTS



**KCI TECHNOLOGIES**  
ENGINEERS  
PLANNERS  
SCIENTISTS  
CONSTRUCTION MANAGERS  
801 TRAVIS, SUITE 2000  
HOUSTON, TX 77002  
PHONE: 713-237-9800  
FAX: 713-237-9801  
Texas Registered Engineering Firm F-10573

Project No.  
PLUMBING DETAILS  
Sheet No.

**P3.02**