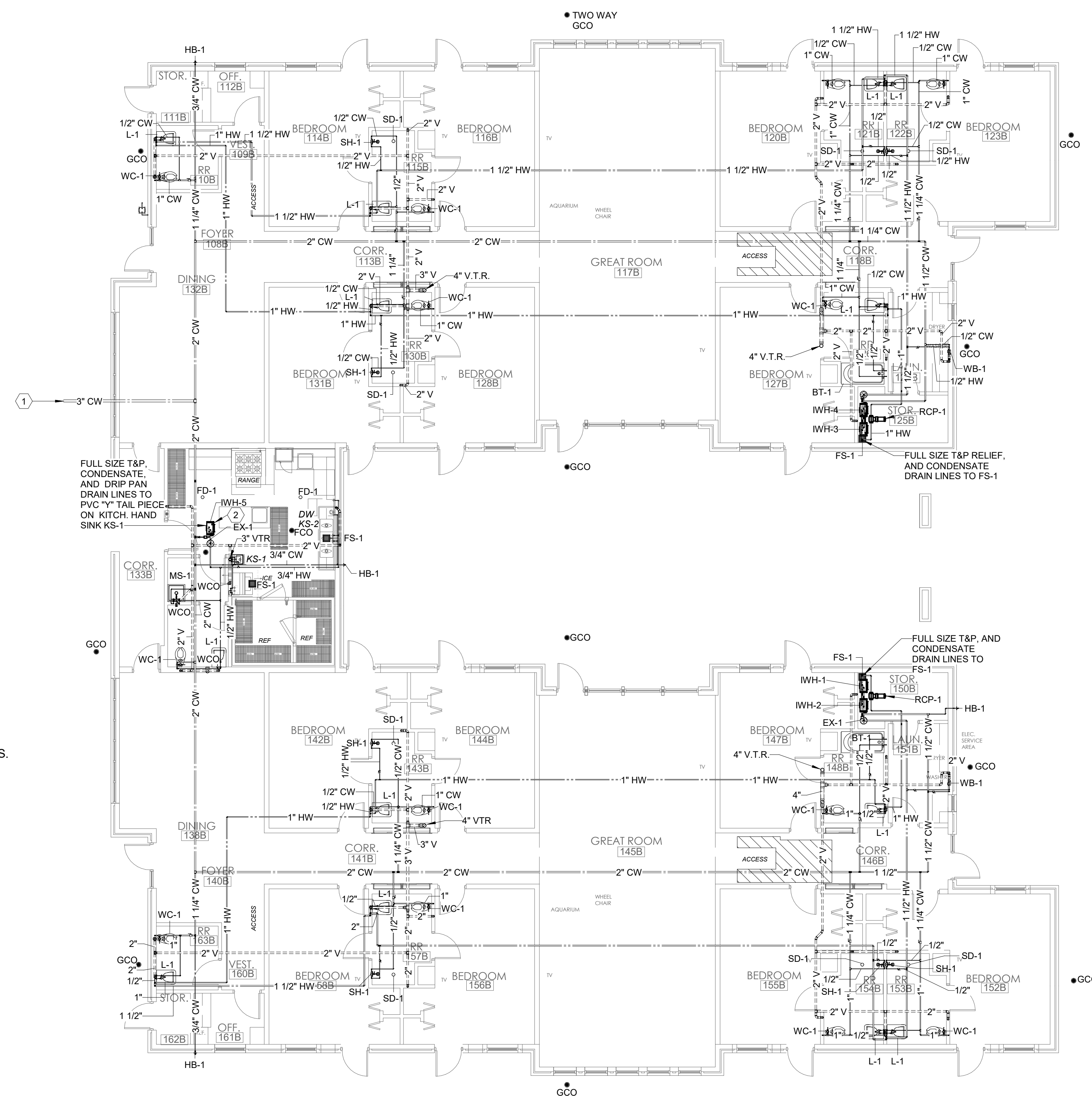
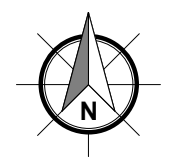


File Name: C:\DMS\Revit\_Projects\Optimum Personal Care - Phase 2-PLBG\_paul.corley.rvt  
 User: paul.corley  
 Date/Time: 2/13/2019 1:38:52 PM



- KEYED NOTES**
- 1 EXTEND TO WATER METER BY CIVIL.
  - 2 IWH-5 IN ATTIC SPACE ABOVE. COORDINATE LOCATION WITH WORK PLATFORM BY OTHERS.

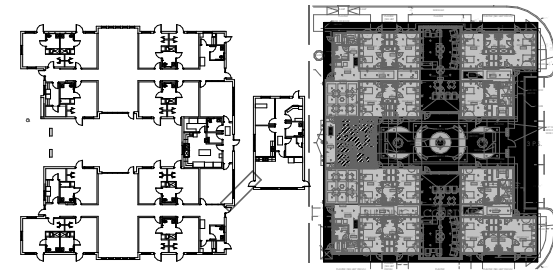
**1 PLUMBING PLAN - AREA B - ABOVE FLOOR**  
 1/8" = 1'-0"



**OPTIMUM CARE**  
**SUGAR LAND, TEXAS**



Revision Schedule		
#	Date	Description
10-26-18		PERMIT, PRICING, AND CONSTRUCTION
02-14-19		CITY COMMENTS



Project No.  
 PLUMBING PLAN - AREA B - ABOVE FLOOR

Sheet No.

**P1.02**

02-18-19

**KCI**  
 TECHNOLOGIES  
 ENGINEERS  
 PLANNERS  
 SCIENTISTS  
 CONSTRUCTION MANAGERS  
 801 TRAVIS, SUITE 2000  
 HOUSTON, TX 77002  
 PHONE: 713-237-9800  
 FAX: 713-237-9801  
 Texas Registered Engineering Firm F-10573