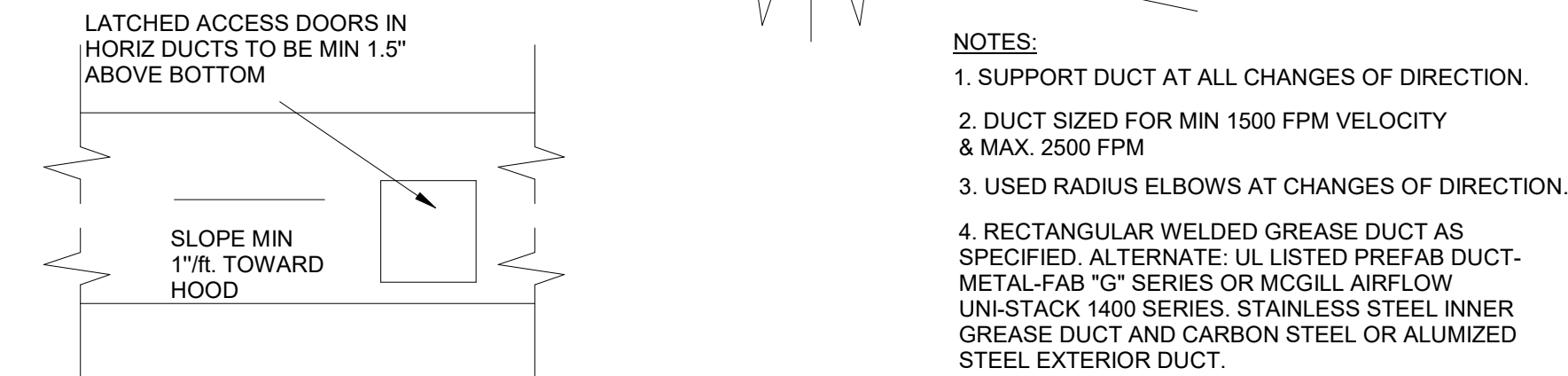
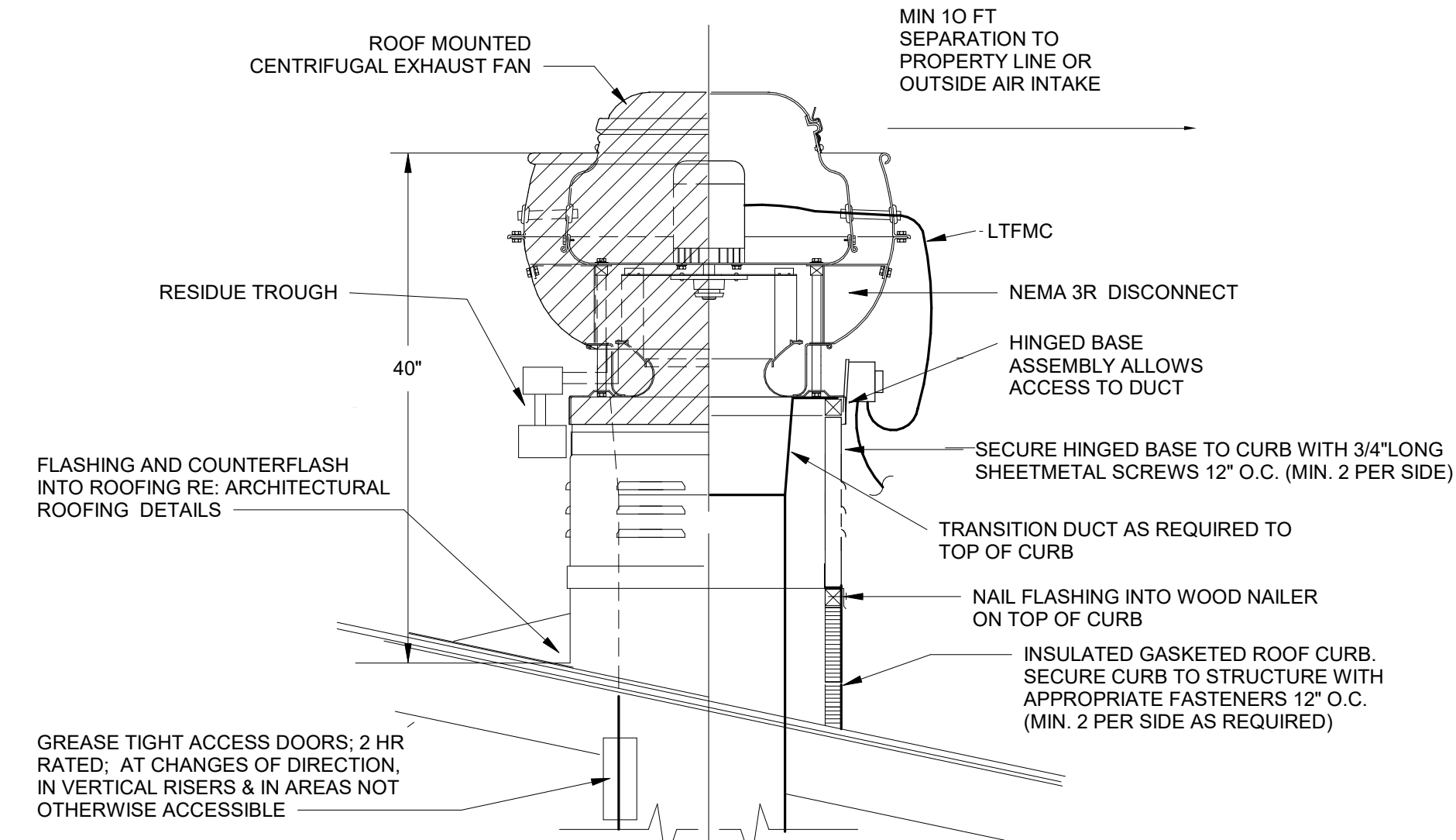
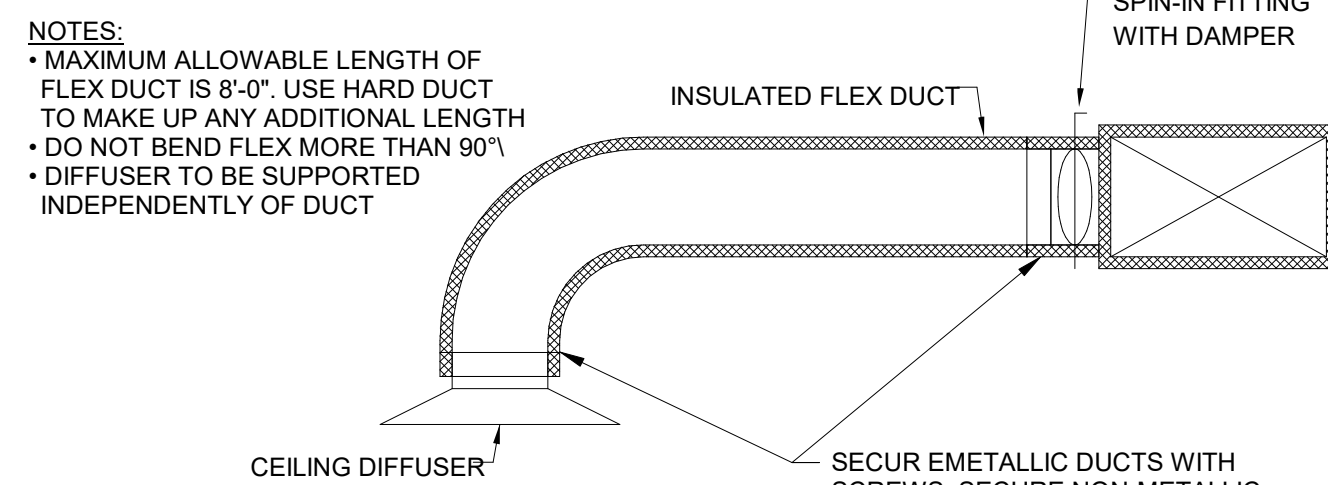


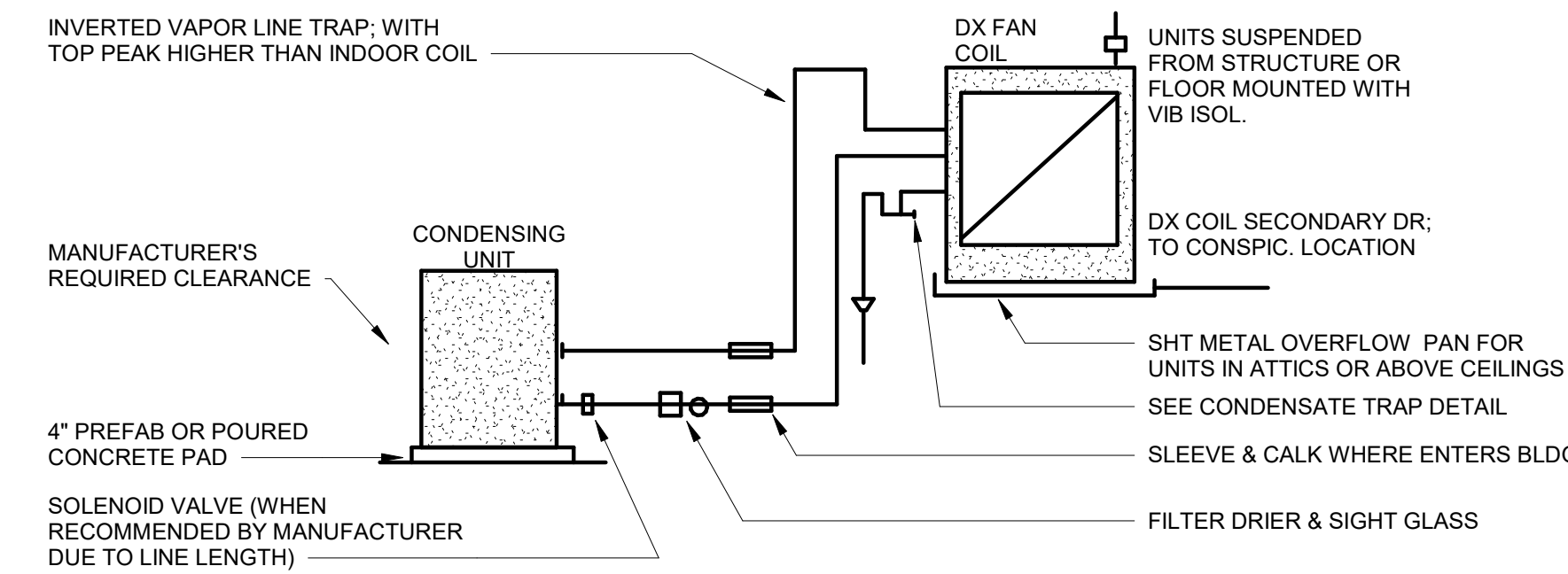
6 KITCHEN GREASE DUCT INSULATION DETAIL
12" = 1'-0"



7 KITCHEN EXHAUST FAN DETAIL
NOT TO SCALE

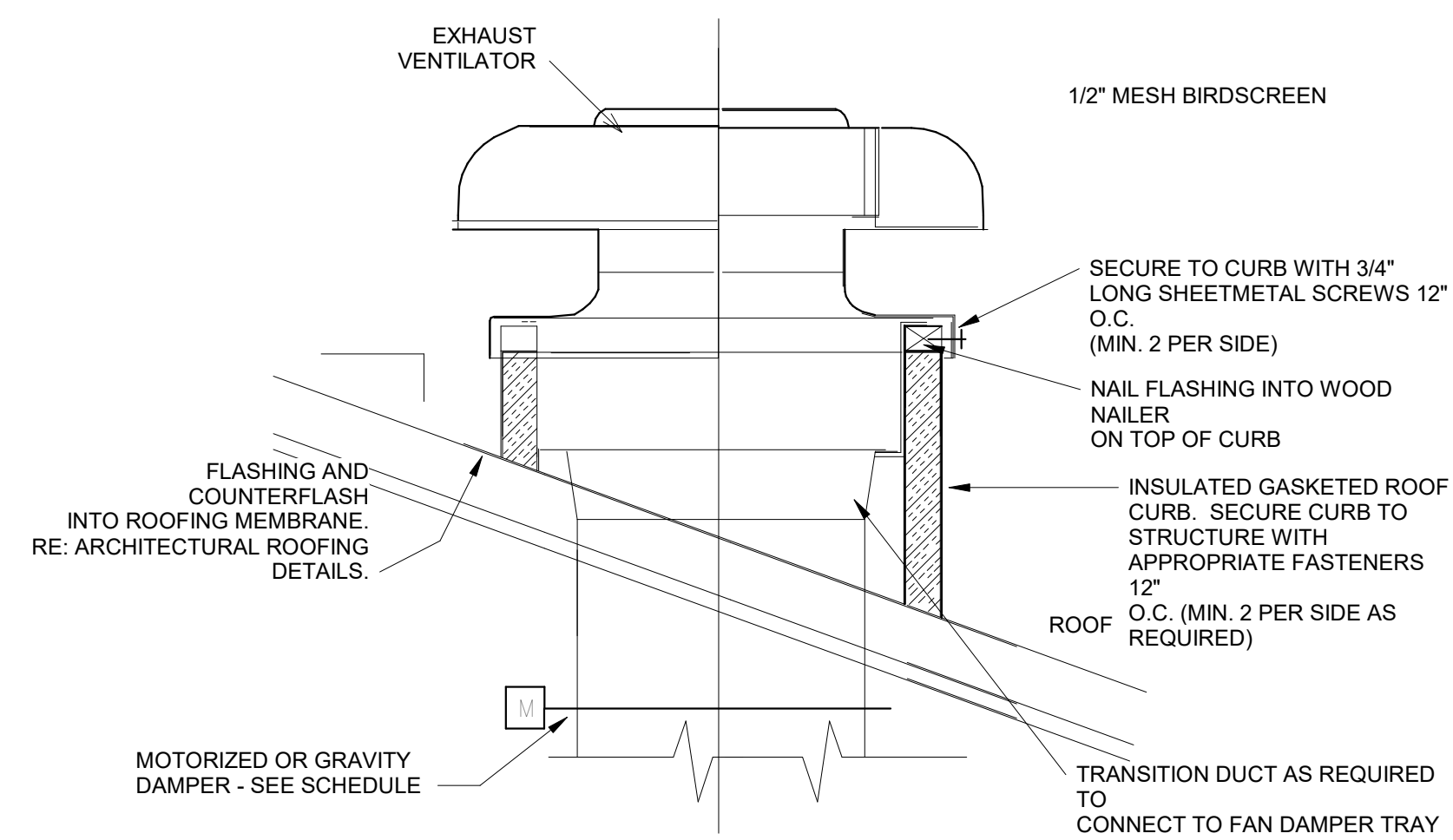


5 DIFFUSER CONNECTION
NOT TO SCALE

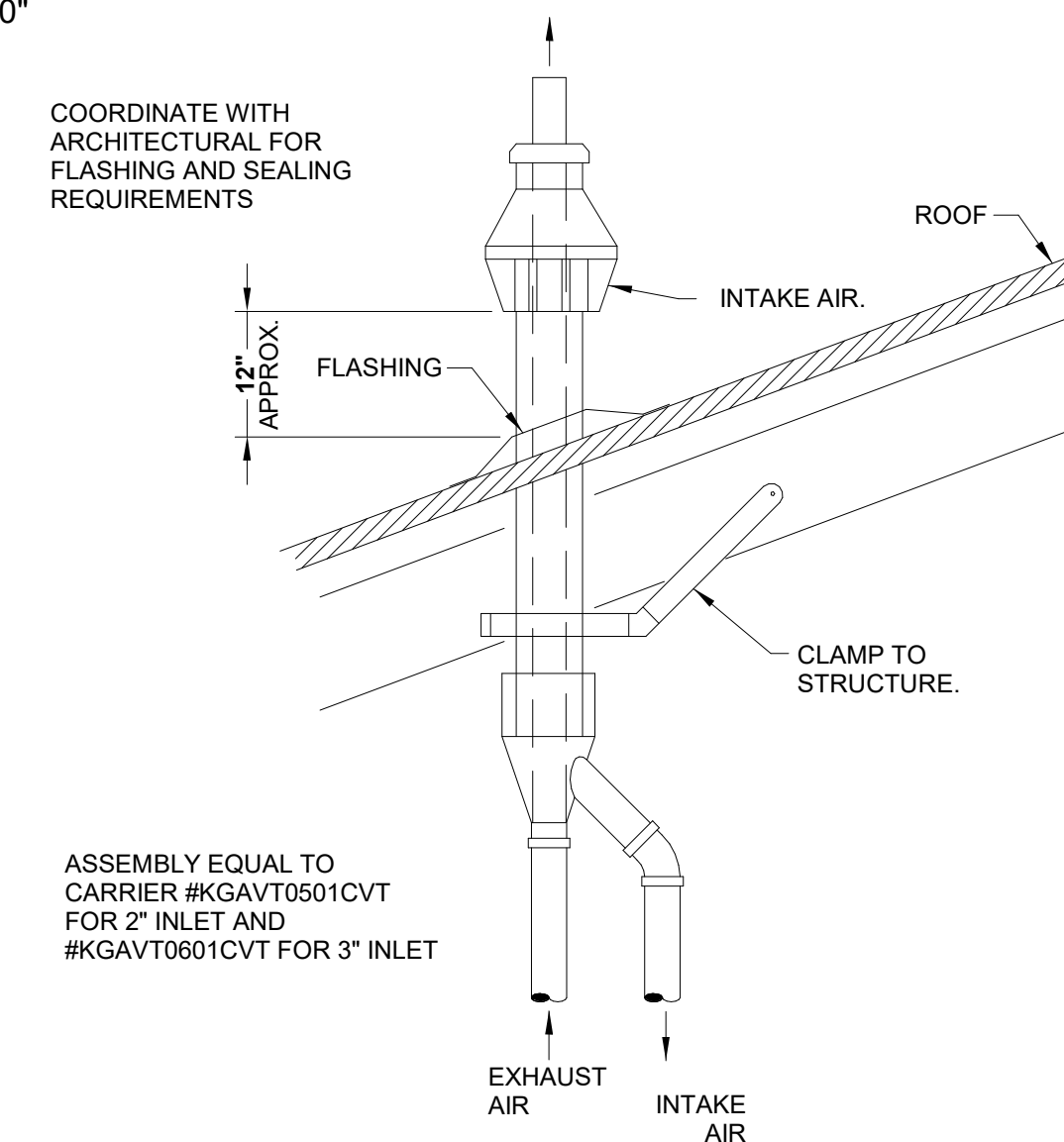


- NOTES:
1. SUCTION LINE TO INSULATED; INSULATION INSIDE BUILDING TO HAVE 25/50 FLAME/SMOKE RATING
2. HVAC CONTRACTOR RESPONSIBLE FOR LOW VOLTAGE CONTROL WIRING; ELECTRICAL CONTRACTOR PROVIDES LINE VOLTAGE WIRING & DISCONNECTS
3. SIZE REFRIG LINES AS PER MANUFACTURER
4. DUCT SUPPLY & RETURN. PROVIDE FLEX DUCT CONNECTION ON SUPPLY & RETURN DUCT (UNLESS FIBERGLASS DUCT)

4 DIRECT EXPANSION COOLING COIL AND CONDENSING UNIT
NOT TO SCALE

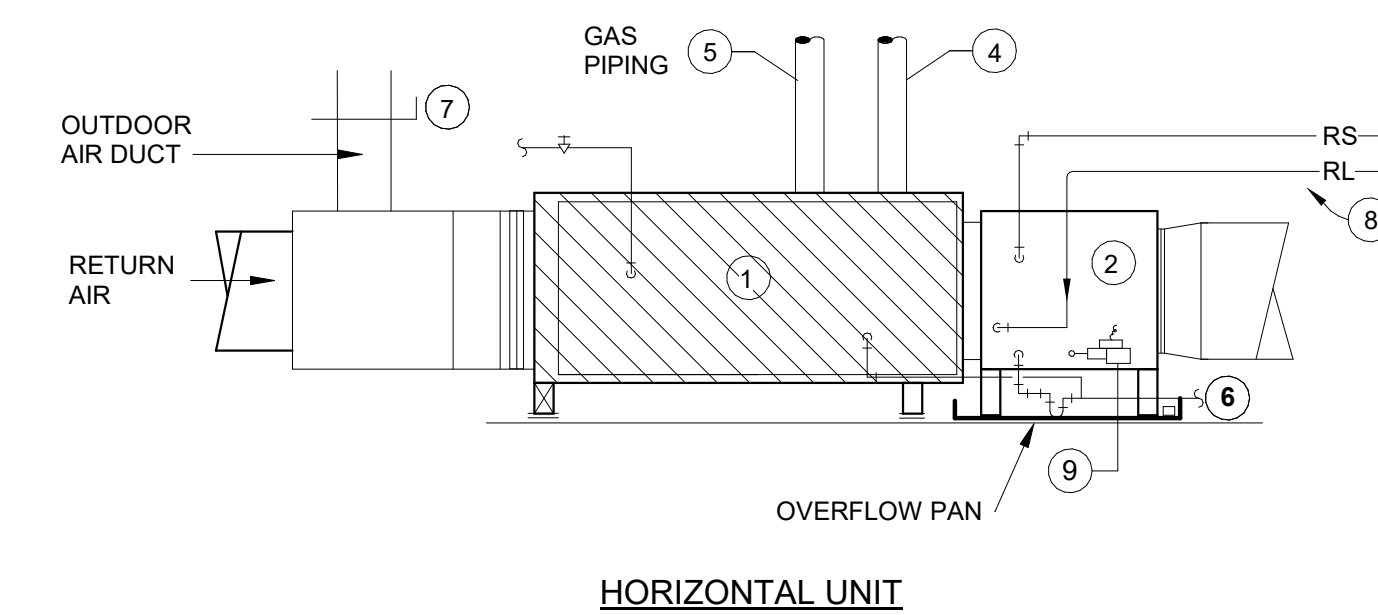


3 GRAVITY ROOF VENTILATOR DETAIL
12" = 1'-0"

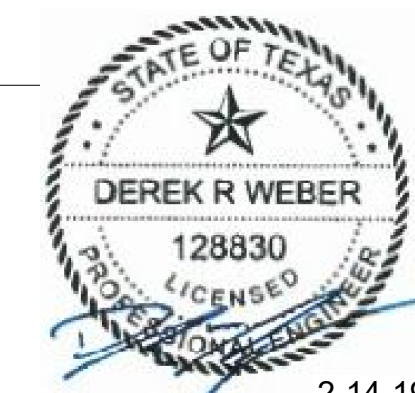


2 FURNACE CONCENTRIC VENT/COMBUSTION INTAKE DETAIL
12" = 1'-0"

- 1 FURNACE.
2 COOLING COIL
3 FLEX DUCT CONNECTION.
4 COMBUSTION AIR INTAKE PIPE.
5 EXHAUST AIR OUTLET PIPE.
6 COOLING COIL CONDENSATE DRAIN TRAP AND ROUTE TO FLOOR DRAIN
7 OUTSIDE AIR DAMPER.
8 REFRIGERANT PIPING.
9 SECONDARY DRAIN CONNECTION - INSTALL LITTLE GIANT AC-5 OVERFLOW SAFETY SWITCH 120V ELEC.



1 FURNACE/COOLING COIL DETAIL
12" = 1'-0"



OPTIMUM CARE
SUGAR LAND, TEXAS



Revision Schedule		
#	Date	Description
10-26-18		PERMIT, PRICING, AND CONSTRUCTION
02-14-19		City Comments

Project No.

MECHANICAL DETAILS

Sheet No.

M4.1